

MOSKO MOTO SU ATTACHMENT HARDWARE KIT



Thank you for purchasing Happy Trails products. Our products are proudly hand made in Boise Idaho, USA. If you have any questions or concerns about the installation of this product, please contact us directly at 1-800-444-8770 or e-mail installation@happy-trail.com.

Before you begin, place the bike on a hard level surface where you have room to work. Lay out the parts included in this kit and compare to the parts list of these instructions. If any parts or hardware are missing, contact us immediately at the number listed above.

When installing HT guards and racks, **leave all bolts loose until entire rack is fitted.** This allows the rack to move and take up differences in frame construction.

We also recommend that removable strength thread locking compound be used on all threaded connections.



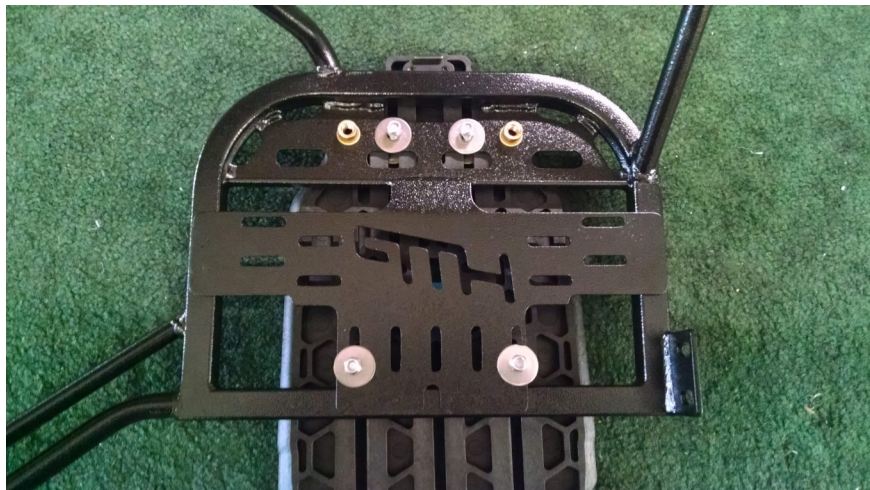
Step 1. Attach the Mosko plate to the Non-tool plate side of the SU rack OR SL rack (see notes):

Using the 6x25 bolts, fender washers & nuts, attach the Mosko plate to the top SU rack plate. Next, attach the pucks to the lower section of the Mosko plate using the puck, 6x45 bolt, standard 6mm washer, 6mm fender washer and 6mm nut. Position the Mosko plate where desired and tighten the top mounting bolts. Next, place the pucks all the way down against the bottom tube of the SU rack with the metal tab on the SU hooking over the tube, then tighten. **SL rack notes**, use four pucks. You will need to wrap the rack with electrical tape where the pucks mount to keep the rack from moving fore and aft.



Step 2. Attach the Mosko plate to the tool plate side of the SU rack:

Using the 6x25 bolts, fender washers & nuts, attach the Mosko plate to the top SU rack plate. Next, attach the lower section of the Mosko plate using the 3/4 spacers between the Mosko plate and the SU inner tool plate using the 6x40 bolt, 6mm fender washer and 6mm nut. Position the Mosko plate where desired and tighten the mounting bolts.





HTPMKMM625

Bolt List for HT SL rack :

- 8 M6x45 SHCS
- 8 M6 Flat fender washers
- 8 M6 Flat washers
- 8 6mm Nylock Nut
- 8 .625 pucks
- 8 Steel puck tabs

HTPMKMM750.1

Bolt List for HT SU rack without inner tool tray mount:

- 4 M6x25 SHCS
- 4 M6x45 SHCS
- 16 M6 Flat fender washers
- 8 6mm Nylock Nut
- 4 .750 pucks
- 4 Steel puck tabs

HTPMKMM750.1T

Bolt List for HT SU rack with one inner tool tray mount:

- 4 M6x25 SHCS
- 2 M6x60 SHCS
- 2 M6x45 SHCS
- 14 M6 Flat fender washers
- 2 M6 Flat washers
- 8 6mm Nylock Nut
- 2 3/4"L x 3/4"W x .319" ID spacers
- 2 .750 pucks
- 2 Steel puck tabs



02/11/2020
JH
Rev. 2