



HAPPY-TRAIL.COM
Dual Sport & Adventure Touring Specialists

Thank you for purchasing Happy Trails products. Our products are proudly hand made in Boise Idaho, USA. If you have any questions or concerns about the installation of this product, please contact us directly at 1-800-444-8770 or e-mail support@happy-trail.com.

Before you begin, place the bike on a hard level surface where you have room to work. Lay out the parts included in this kit and compare to the parts list on the final pages of these instructions. If any parts or hardware are missing, contact us immediately at the number or email listed above.

Step 1

Remove seat by removing the two bolts under the rear fender.

Remove the side panels

Remove the rear fender. Main rear fender bolt locations shown by arrows in Fig 1.

Also remove the left and right passenger peg brackets in preparation for steps 4 and 7.

Step 2

Remove the helmet lock and install the helmet lock tab from the kit. Use the Flat Head M8x20 to install as shown in Fig 2.

Align the holes and tighten this flat head bolt as it will not be accessible after the helmet lock is re-installed. Note you can also opt to leave the helmet lock off

Step 3

Reinstall the helmet lock using the M6x35 Flat Head bolt from the kit and tighten.

Begin to install the left hand rack at this location by inserting a Button Head M8x20 bolt from the BACK side and attach the middle rack point to this bolt, securing with a flat washer and M8 nut as shown at the arrow in Fig 3. Leave this bolt location loose for now. (Note bolt inserted from back side due to limited space at this mount location.)

Fig1



Fig 2



Fig 3



Step 4

The lower side rack mount point is to the upper passenger peg bolt location as shown in Fig 4.

Reinstall the passenger peg bracket ON TOP OF the side rack mount tab and secure with a M8x25 SHCS bolt as shown in Fig 4.

For the lower passenger peg bolt location, insert a 1/4" thick spacer from the kit as shown by the arrow in Fig 4 and insert another M8x25 bolt to secure. Leave bolts loose for now.

Step 5

Install the upper rear rack mount location using an M8x70 SHCS with 2 flat washers and M8 nut.

See Fig 7 for additional location information.

Leave this location loose for now.

Step 6

Moving to the right side rack, install the middle mount point to the tab hole just behind the exhaust bolt mount location as shown in Fig 6. Use a M8x20 bolt, 2 flat washers, and an M8 nut to secure.

Step 7

Repeat steps 4 and 5 for this right side rack to install the passenger peg and rear upper mount points.

Right rear upper mount point shown in Fig 7 for reference.

Fig 4



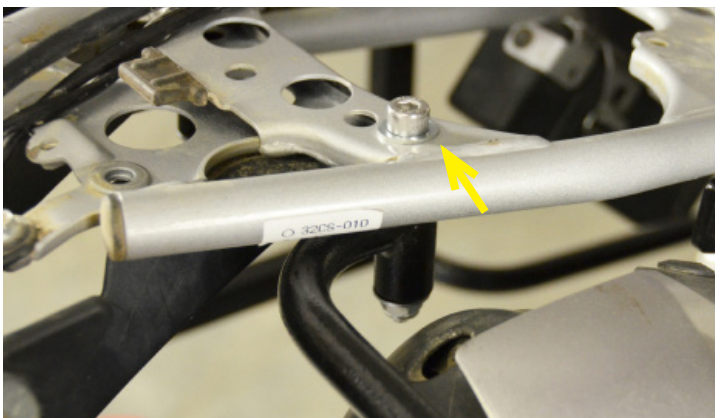
Fig 5



Fig 6



Fig 7



Step 8

Finally install the rear support bumper as shown in Fig 8. Use one M6x16 SHCS bolt, 2 flat washers, and M6 nut at each of the 4 mount locations.

Fig 8



Step 9

Tighten all bolts to the following specifications:

- M8 bolts should be tightened to 18 ft/lbs
- M6 bolts should be tightened to 7 ft/lbs

Reinstall the rear fender, side panels, and seat from step 1.

Your install is now complete!

Fig 9



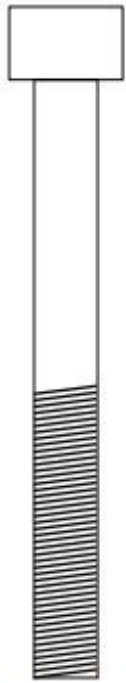
- Recommended Tools:
- 6mm Allen (hex) Wrench
 - 5mm Allen (hex) Wrench
 - 4mm Allen (hex) Wrench
 - 13mm box end wrench
 - 10mm box end wrench



- Hardware List:
- (1) Right side SU rack
 - (1) Left side SU rack
 - (1) Rear support bumper

Bolt Kit
Instructions





X2

M870S



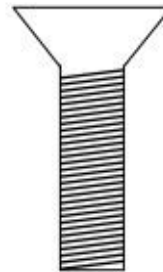
X4

M825S



X2

M820B



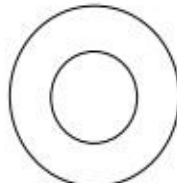
X1

M825F



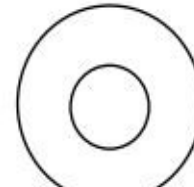
X4

M8N



X8

8mm FW



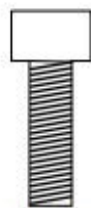
X2

OD3/4, ID .319, L 1/4 Spacer



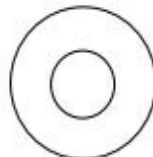
X1

M635F



X4

M616S



X8

6mm FW



X4

M6N



X1

WR250 Helmet Tab
(Aluminum Powder Coated)

