

TRIUMPH TIGER 800/800XC SU RACK HTP8-2-1.1



HAPPY-TRAIL.COM

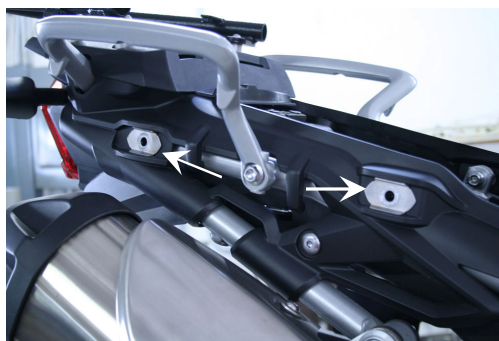
Thank you for purchasing Happy Trails products. Our products are proudly hand made in Boise Idaho, USA. If you have any questions or concerns about the installation of this product, please contact us directly at 1-800-444-8770 or e-mail installation@happy-trail.com.

Before you begin, place the bike on a hard level surface where you have room to work. Lay out the parts included in this kit and compare to the parts list on page 3 of these instructions. If any parts or hardware are missing, contact us immediately at the number or email listed above.

Step 1

Remove the passenger seat from the motorcycle. After removing the seat, remove two bolts indicated in Fig 1.

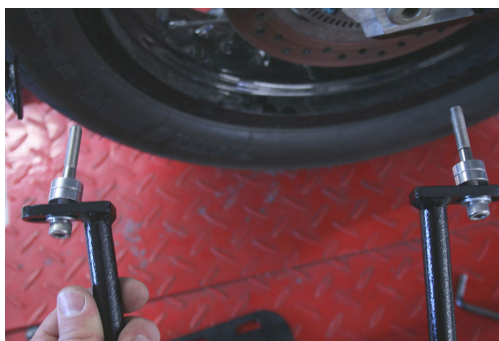
Fig 1



Step 2

Place an M8 washer on each M8x75mm bolt. Slide two bolts through the top mounting points on the SU rack. Slide two M8x1/4" spacers onto each bolt on the inside of the upper mounting points. Slide the bolts through the mounting holes shown in Fig 1.

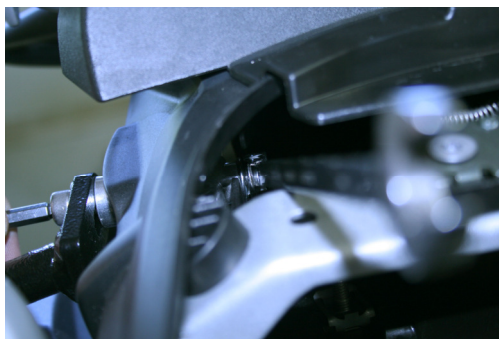
Fig 2



Step 3

Begin threading an M8 Nylock nut on each M8x75 bolt inserted in Step 2. The front bolt is easily accessible however the rear bolt is hidden under the tail plate of the motorcycle. Place an M8 Nylock nut in a 13mm box end wrench and reach under the tail plate to find the rear bolt as shown in Fig 3. Do not tighten bolts completely.

Fig 3



Repeat steps 1-3 with both sides of the SU rack on either side of the motorcycle.

TRIUMPH TIGER 800/800XC SU RACK HTP8-2-1.1

Step 4

The lower mounting point of the SU rack is near the lower frame stanchion. Place two clamp halves around the frame stanchion and below the SU rack lower mounting point. Slide an M8x65mm bolt through both mounting holes and place an M8 Nylock nut on either bolt and thread them in loosely.

Fig 4



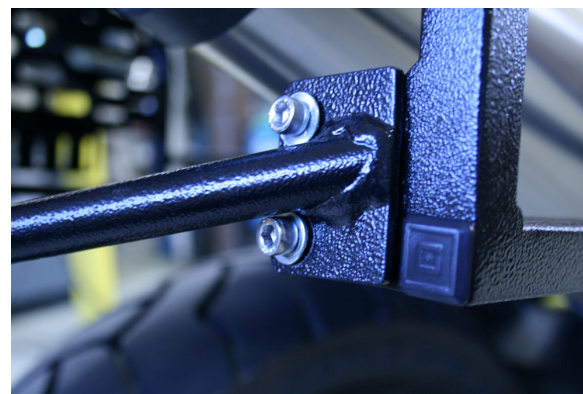
Step 5

Place an M6 washer under each M6x16 bolt and attach the bumper to the SU side racks as shown in Fig 5. Place an additional M6 washer and an M6 nut on the back side of each bolt.

Repeat steps 4 and 5 on both sides of the motorcycle.

You may now tighten all bolts completely. M6 bolts should be torque to 9ft/lbs and M8 bolts should be torque to 18ft/lbs.

Fig 5



Hardware List:

- 4 M6x16 bolts
- 4 M6 Nylock Nuts
- 8 M6 flat washers
- 4 M8x65mm SCHS
- 4 M8x75mm SCHS
- 4 M8x1/4 spacers
- 4 M8 Flat Washers
- 8 M8 Nylock Nuts
- 4 Aluminum Clamp Halves
- 2 SU Side Racks (not pictured)
- SU Bumper (not pictured)

Recommended tools:

- 6mm Allen Wrench
- 5mm Allen Wrench
- 13mm Box End Wrench
- 10mm Wrench



Happy Trails Products

6/24/11
Rev. 1