

DL-650 CENTERSTAND HTP7-5-16



Thank you for purchasing Happy Trails products. Our products are proudly hand made in Boise Idaho, USA. If you have any questions or concerns about the installation of this product, please contact us directly at 1-800-444-8770 or e-mail installation@happy-trail.com.

Before you begin, place the bike on a hard level surface where you have room to work. Lay out the parts included in this kit and compare to the parts list on page 3 of these instructions. If any parts or hardware are

Step 1

Locate attachment holes on both the center stand as well as the frame of the motorcycle.

Attachment holes on the frame are to be found by looking under either side of the motorcycle near the rear shock (Fig 1.2).

Attachment holes on the center stand are located at the front of the stand (Fig 1.1).

Fig 1.1



Step 2

Locate and remove the following hardware from the included bolt kit: (fig 2)

- One 10x35mm bolt
- One 10mm washer
- One 8x35mm bolt
- One 8mm washer
- Two 13/32" spacers

Fig 1.2



Step 3

When necessary hardware has been set aside, move to the side of the motorcycle nearest the side stand. Place the 10mm washer onto the 10mm bolt, and the 8mm washer onto the 8mm bolt. Set the bolts, washers and spacers nearby as they will be necessary soon. Use one hand lift the center stand into position, aligning the mounting holes on the center stand with the mounting holes on the frame. Using the other hand, insert the 8x35mm bolt and washer into the TOP attachment hole. Place one 13/32" long x 3/4" OD spacer behind the bolt and begin threading it into the TOP mounting point.

Fig 2



DL-650 CENTERSTAND HTP7-5-16

Step 3 continued

Using a free hand support the center stand to ensure unnecessary pressure is not placed on the 8x35mm bolt. Once the top bolt has begun to thread into the hole, insert the 10x35mm bolt into the BOTTOM mounting hole on the center stand. Slide one 13/32" long x 3/4" OD spacer behind the bolt and thread it into the hole by hand. Do not completely tighten either bolt as the center stand may bind into an incorrect position (Fig 3).

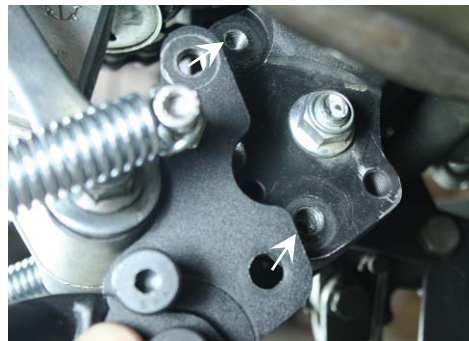
Fig 3



Step 4

Move to the opposite side of the motorcycle to continue installation. Clearance is more difficult on this side of the motorcycle due to the position of the exhaust headpipe, although installation is similar on both sides (Fig 4).

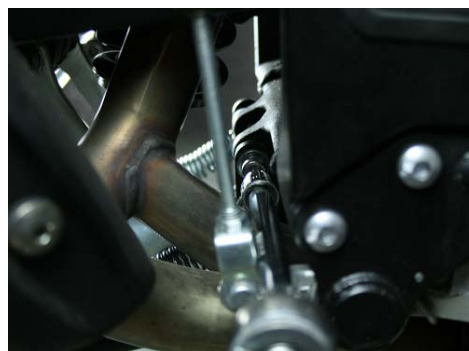
Fig 4



Place the 10mm washer onto the 10mm bolt, and the 8mm washer onto the 8mm bolt. Set the bolts, washers and spacers nearby as they will be necessary soon. Use one hand lift the center stand into position, aligning the mounting holes on the center stand with the mounting holes on the frame. Unlike the previous step, insert the 10mm bolt and washer BOTTOM mounting hole on the center stand first. Slide one 5/8" long x 3/4" OD spacer behind the bolt and thread it into the hole by hand.

Next, insert the 8x35mm bolt and washer into the TOP attachment hole. Place one 5/8" long x 3/4" OD spacer behind the bolt and begin threading it into the TOP mounting point. This may be difficult due to clearance issues with the headpipe.

Fig 5



Step 5

Using a 7" 6mm Allen wrench, or a 6mm Allen socket and 7" ratchet extension, reach between the frame and rear master cylinder rod to tighten the top mounting bolt.

Step 6

You may now tighten all four connecting bolts. Bolts should be tightened to the following specifications:

- 8x35mm (TOP) bolts to 17ft/lbs
- 10x35mm (BOTTOM) bolts to 34ft/lbs

When bolts have been torqued to the specifications listed the center stand is ready for use.

DL-650 CENTERSTAND HTP7-5-16

IMPORTANT:

This stand is designed to be a work stand. It is not a ride off stand. It is designed to carry the load of the bike and luggage only. **Do not sit on the bike with it on the center stand.** The side stand **MUST** be deployed to extend or retract the center stand.



Hardware List:

Assembled Stand
Bolt Kit

Recommended Tools:

6mm Allen wrench at least 7" long, or 6mm Allen wrench socket with 7" extension

8mm Allen wrench



Bolt List:

- 2 M8x35 10.9 Hardened bolts
- 2 M10x35 10.9 Hardened bolts
- 2 5/8" long x 3/4 OD spacers
- 2 13/32" long x 3/4 OD spacers
- 2 10mm flat washers
- 2 8mm flat washers



9/19/11
HH
REV4