



Thank you for purchasing Happy Trails products. Our products are proudly hand made in Boise Idaho, USA. If you have any questions or concerns about the installation of this product, please contact us directly at 1-800-444-8770 or e-mail installation@happy-trail.com.

Before you begin, place the bike on a hard level surface where you have room to work. Lay out the parts included in this kit and compare to the parts list in these instructions. If any parts or hardware are missing, contact us immediately at the number listed above.

NOTE:
When installing HT guards and racks, leave all bolts loose until entire rack is fitted. This allows the rack to move and take up differences in frame constructions. We recommend that thread locking compound be used on all bolts.

Installation Instructions

****Note: A stock tail rack or factory grab handles must be present to mount Happy Trails SU racks.**

Remove the passenger peg brackets and the turn signals. Remove the front tail rack or grab handle mounting bolts.

Reinstall the passenger pegs using the passenger peg lowering brackets as shown in the photo at the right. Use the included M8x25mm bolts adding an 8mm Nylock to the lower mounting point.

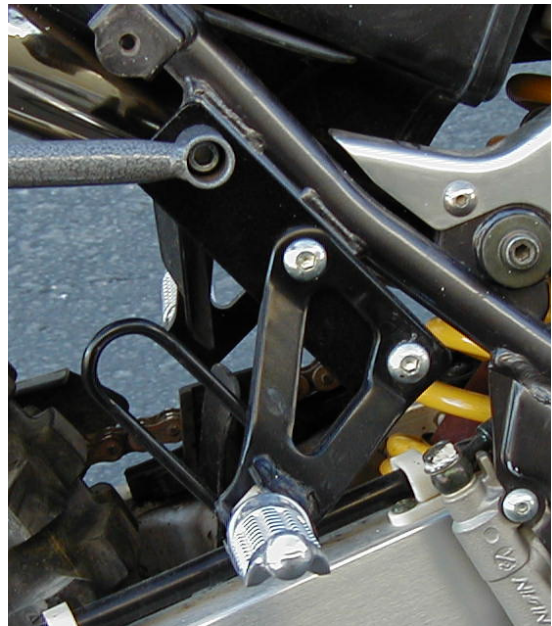
Install the SU starting with the front upper mount. Thread in the M8x80 SHCS through the SU mount, front tail rack mount and into the frame (see note on page 2 for 2011 model bikes).

Thread the M8x50 bolts through the front mount and foot peg lowering bracket into the frame.

Install the rear mount using the M8x75mm SHCS, 3/4"x1" SPACER, Flat Washer and 8mm Nylock through the SU rack, turn signal tab and rack flange. Make sure the tabs are level with the ground and to each other and tighten these mounts.

Install the bumper using the M6x16 SHCS, 2 flat washers, and Nylock nuts. Once all are installed, go back and tighten down all the points on the SU mounts.

Reinstall turn signals in the tabs. The wires may need to be lengthened.



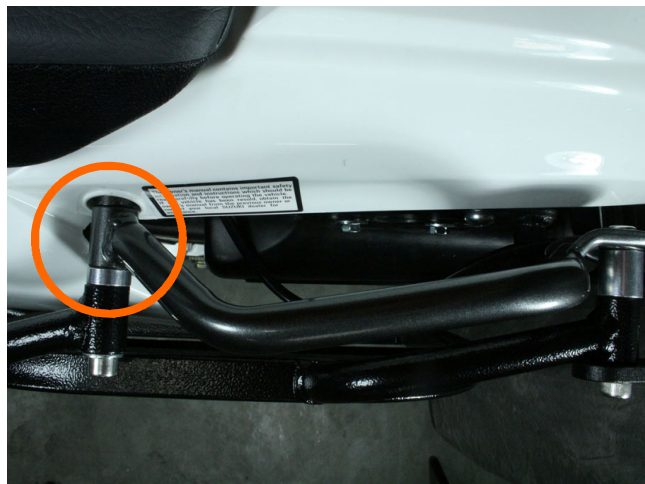
Note: Photos may contain views of Happy-Trail products other than the product you purchased. Please visit www.happy-trail.com for information on those products.

SUZUKI DR650 SU RACKS HTP7-4-1-9 & HTP7-4-1-12

Note:

In 2011 Suzuki slightly re-designed their grab handle. The front grab handle mounting point width was reduced from 1-1/4" to 1". A 1/4" aluminum spacer has been included in the bolt kit to allow for discrepancy with the 2011 grab handles. If in doubt about using the 1/4" spacer refer to the included photograph and measure the attachment point which is circled. Use the aluminum spacer if the grab handle measures 1" at this point.

Insert the spacer as shown in the photograph.



Bolt List:

2	M8x80 SHCS
4	M8x50 SHCS
2	M8X75 SHCS
4	M8X25 BUTTON HEAD BOLTS
4	M6x16 SHCS
2	5/16 Flat Washer
8	1/4 Flat Washer
4	8mm Nylock Nuts
4	6mm Nylock Nuts
2	3/4"X1" SPACER
2	3/4x1/4" SPACER

Hardware List:

Left and Right SU Rack
Bumper
2 short turn signal tabs
2 passenger peg drop down brackets
Bolt Kit
Instructions



Happy Trails Products

Rev. 2
7/20/2011
J4
HTP7-4-1B-20