

HTP 4-9-1 VERSYS SU RACK



Thank you for purchasing Happy Trails products. Our products are proudly hand made in Boise Idaho, USA. If you have any questions or concerns about the installation of this product, please contact us directly at 1-800-444-8770 or e-mail installation@happy-trail.com.

Before you begin, place the bike on a hard level surface where you have room to work. Lay out the parts included in this kit and compare to the parts list on page 3 of these instructions. If any parts or hardware are missing, contact us immediately at the number or email listed above.

Fig 1

Step 1

Remove seat from motorcycle. Disconnect both turn signal wires from the plastic couplers just above the tail light.

For future reference, the left turn signal is connected to the black coupler and the right turn signal is connected to the gray coupler (Fig 1)

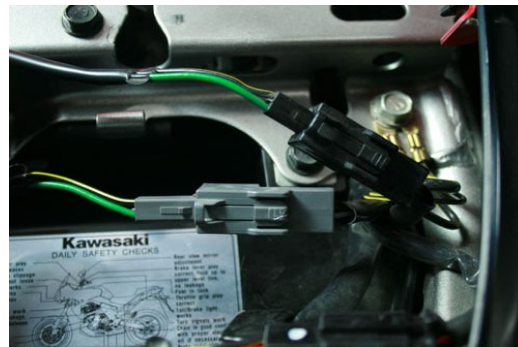


Fig 2

Step 2

Remove both rear turn signals from the motorcycle by removing the Phillips screw (shown in Fig 2) from each side. Remove the metal plate from the outside of the turn signal mounting bracket and set it aside. Remove the inner metal plate from the inside of the turn signal stalk using a thin flathead screwdriver. Carefully slide the wire down through the hole between the sub-frame and outer plastic body panels. Note wire location during removal as wires will be slid through this hole later.



Fig 3

Step 3

Slide turn signal mounting stalk through the larger hole in the turn signal mounting bracket as shown in Fig 3. Slide the turn signal wire through the hole in the inner metal plate and slide the plate into the turn signal stalk. Repeat the process with both turn signals.



Step 4

Place the Happy Trails spacer behind the recess for the factory turn signal, on the inside of the fender. Place the turn signal mounting bracket (with turn signal attached) and begin threading one M8x20 bolt through the hole with a M8 washer on either side. Start threading the bolt through the included M8 nylock nuts. Do not tighten completely.

Fig 4



Step 5

Before tightening the M8 turn signal connecting bolts, route the wire back through the slots in the turn signal mounting tabs as indicated by the white line in Fig 5.

Re-route the turn signal wires between the sub-frame and body panels. It may be necessary to re-route the right turn signal wire to the right side of the subframe. There is enough clearance between the subframe and body panel to do so.

Fig 5



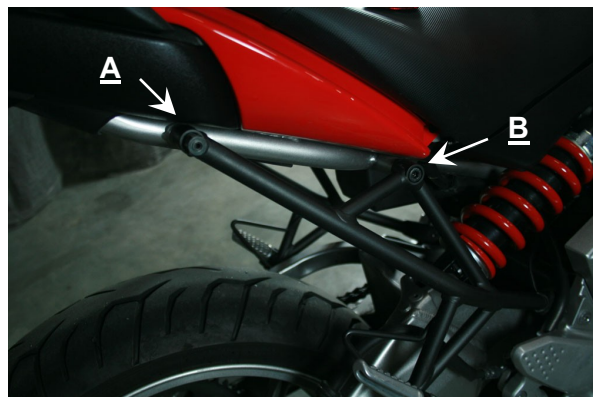
Tighten both M8 bolts with an Allen Wrench, using a 13mm wrench to hold the M8 nut on the opposite side. Place the seat back on the motorcycle.

Fig 6

Step 6

On both sides of the motorcycle, remove bolt A by unscrewing the red reflector and loosening the bolt with a 14mm wrench.

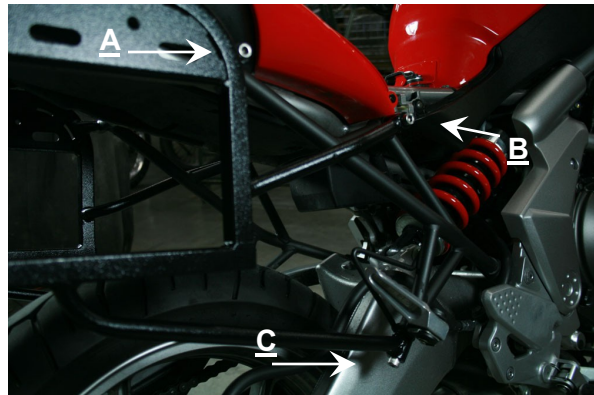
Pull the small plastic cover from bolt B using a thin bladed flathead screwdriver. Remove the bolt using a 6mm Allen Wrench.



Step 7

Place an M8x65 bolt through mounting points A and B on the SU rack side panel. Do not thread the bolts in more than finger tight. Place an M8x35 bolt into mounting point C at the bottom of the foot peg. Do not thread the bolt in more than finger tight. Repeat this procedure on both sides of the motorcycle.

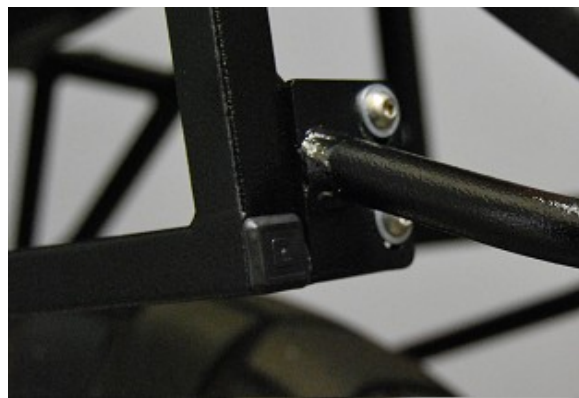
Fig 7



Step 8

Attach the bumper to either side of the SU rack by threading each of the four M6x15mm bolts through the bumper and into the mounting holes at the back of the SU rack. Place one M6 washer on the front and on the back of each bolt and thread the bolts into the included M6 nylock bolts.

Fig 8



You may now tighten all bolts on the rack to the following torque specifications:

M6—8ft/lbs

M9—18 ft/lbs

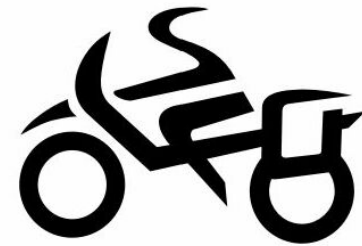
Recommended Tools:

- 5MM Allen Wrench
- 6mm Allen Wrench
- 10mm Wrench
- 13MM Wrench
- 14MM Wrench
- Phillips Screwdriver
- Small Flathead Screwdriver



Hardware List:

- 2 M8x35 SHCS
- 4 M8x65 SHCS
- 2 M8x20 SHCS
- 4 M8 Washers
- 2 Turn Signal Tabs
- 2 Turn Signal Spacers
- 4 M6x15 SHCS
- 4 M6 Nylock Nuts
- 8 M6 Washers
- 2 M8 Nylock Nuts



Happy Trails Products

8/26/11
Rev. 2